

DESIGN PARAMETERS

1 PLANTED BOUNDARY

The dense and mature existing vegetation forms a screen boundary with the Glendale Avenue properties. The planting will be retained and reinforced with a new hedge and new trees to the east. This will help screen the new development from adjacent dwellings. Low ornamental planting in a raised bed will soften the close board fence between 1A and 1C. A semi native hedge will provide screening to the western boundary from Shelley Close.



Existing vegetation to be retained to boundary with Glendale Avenue properties



Weigela florida 'Rosea'

Prunus lusitanica



Viburnum opulus

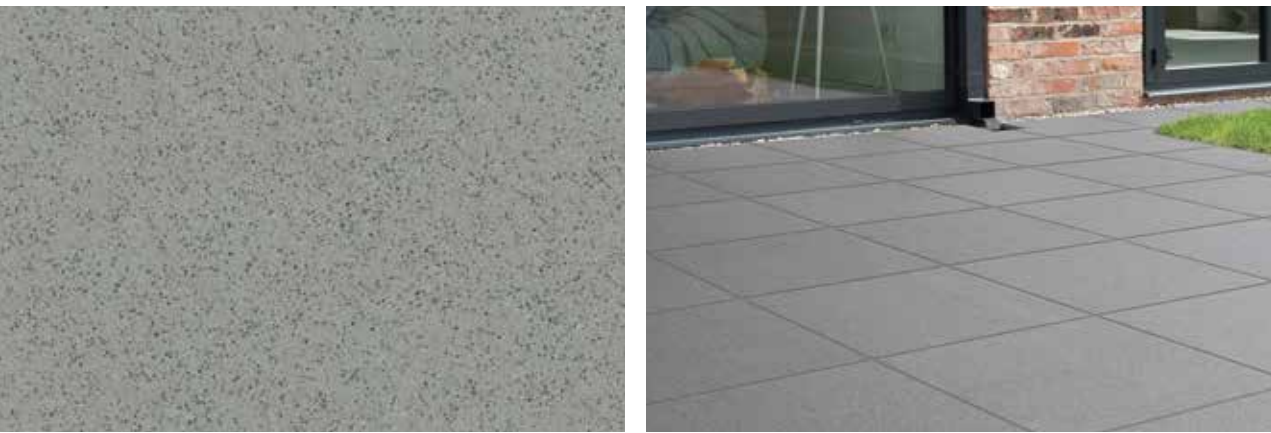
Betula pendula



Low ornamental planting in raised planting bed

2 THE GARDEN

The garden will offer usable space with a grassed area and a patio for residents. The hedge provides a simple delineation from adjacent property (1A) and Shelley Close. It not only provides screening but also continues the existing eastern boundary planting. The patio and the path linking the rear and the side of the property will be paved with mid grey flags to complement the proposed house façade.



Mid grey paving flags

Flag paved patio

3 PARKING SPACES

Two new bays will extend the existing drive to allow for the appropriate parking provision. They will be surfaced with mid grey concrete blocks with a silver grey edging and kerb. The texture will contrast with the road whilst the colours will harmonise with the proposed path linking the parking bays to the rear garden.



Mid grey paving blocks

Mid grey blocks and silver grey edging

1A SHELLEY CLOSE, EDGEWARE

LANDSCAPE MASTERPLAN



Aerial : © Google Maps

KEY

- Application boundary
- Illustrative indication of existing trees and shrubs to be retained. Refer to Tree Constraints Plan by Arbol EuroConsulting Ltd.
- Portuguese Laurel (PL), Silver Birch (SB), Lawson Cypress (LC), Cockspur Thorn (CT), Himalayan Coloneaster (HC)
- Extra heavy standard tree, 14-16cm girth, double staked.
- Betula pendula (Bp), Thuja plicata (Tc)
- Screening ornamental hedge mix encompassing species such as Viburnum opulus, Weigela florida 'Rosea', Prunus lusitanica
- Screening ornamental hedge such as Prunus lusitanica to continue existing boundary hedging
- Low planter and prepared planting bed for residents to plant up to their own preference. Retaining wall to be timber
- Existing grass to be retained and reseeded where appropriate after construction
- Proposed parking bays - 240 x 160mm mid grey paving block - Conservation kerb unit in Charcoal
- Proposed path - 400 x 400mm mid grey paving flags - Conservation edge unit in Charcoal
- Proposed patio - 600 x 600mm mid grey paving flags - Conservation edge unit in Charcoal
- Existing close board fence to be retained

P03	11.06.20	Amended to Arboriculturist's comments.	MC CX
P02	09.06.20	Amended to client's comments.	MC CX
Rev	Date	Comments	Dr Ch

guarda
landscape
Staplelards Farm, Althamstone, Bures, Essex, CO8 5DT
The Record Hall, 14-16A Baldwin's Farden, Hatton Garden, London, EC1N 7RJ
+44 (0) 1206 638085 · www.guardalandscape.com

Client
Alan Cox Associates
Site
1A Shelley Close, Edgware
HA8 8DX
Drawing Title

Scale		Status
1:200 @ A1		Preliminary
Project	Drawing Number	Revision
2030	GUA-DR-L-001	P01
Drawn	Checked	Date
MC	CX	June 2020
© GUARDA Ltd. 2020		