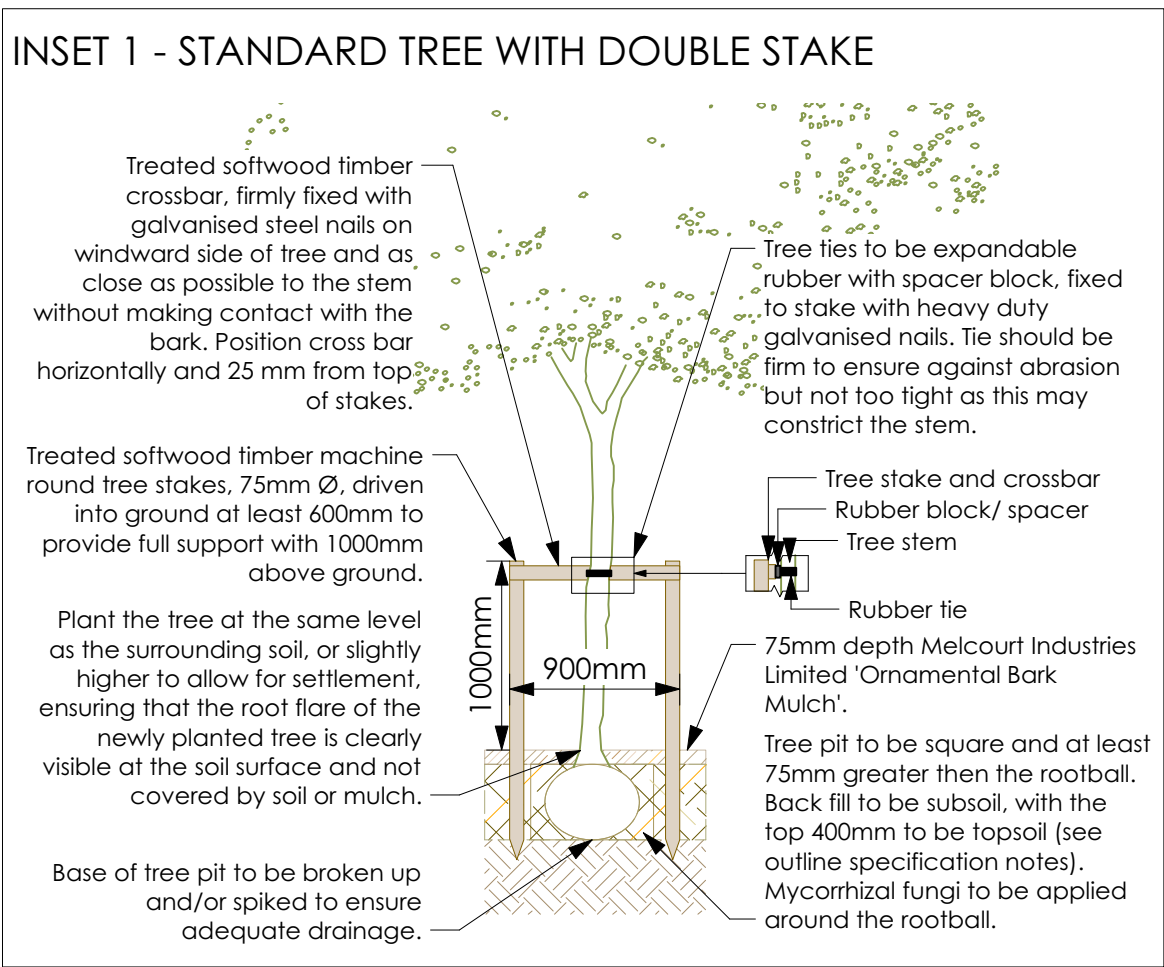
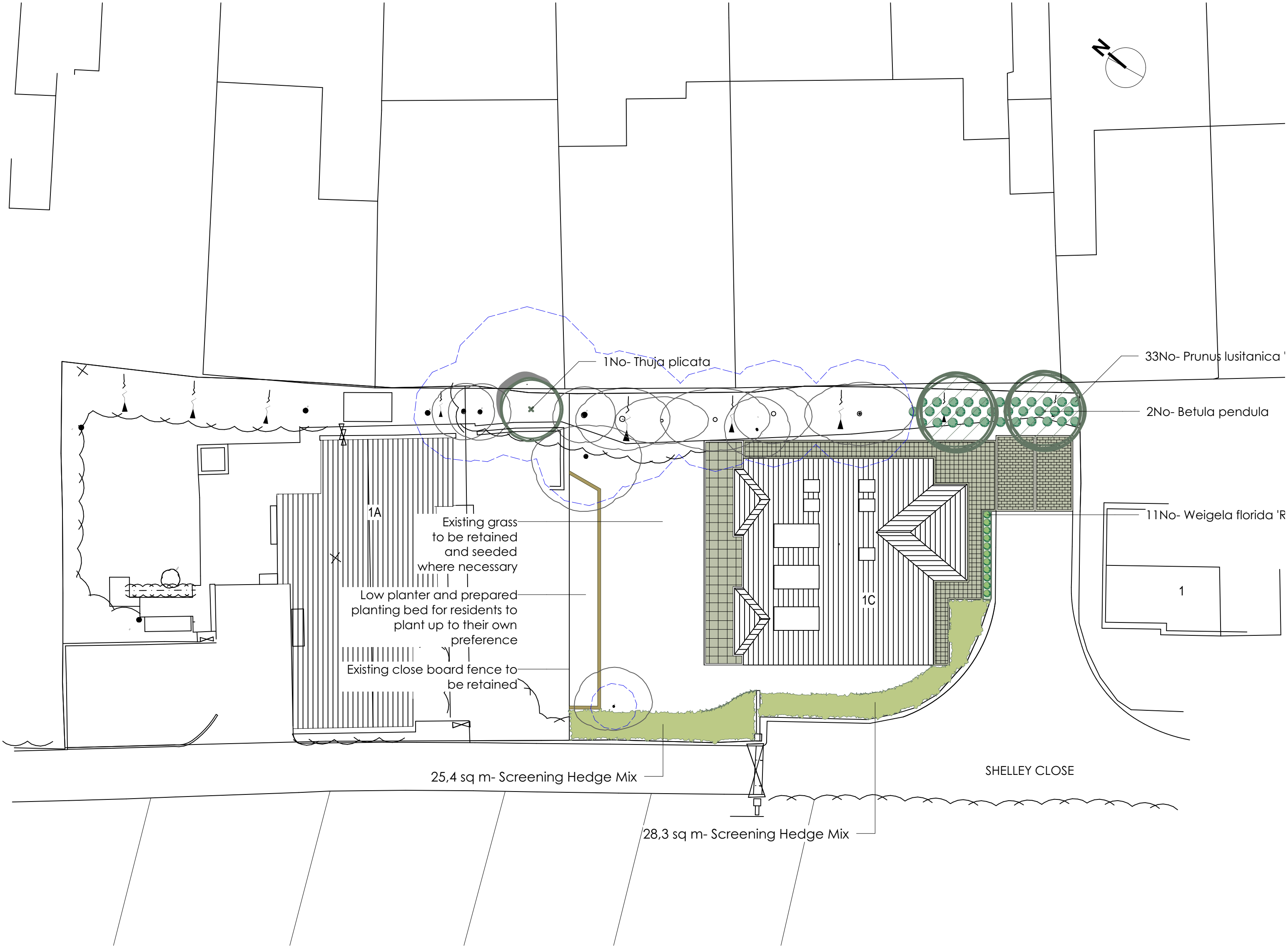


Outline Specification Notes

- Setting out - check that all setting out conforms to the plan before cultivation and planting works are carried out. With narrow beds between walls/ fences and path edgings, ensure that the bed has space free from concrete footings before planting. If the bed is sealed with concrete, then the landscape contractor shall contact the site manager or landscape architect to determine the correct course of action. The arrangement of all beds will be checked by the inspecting landscape architect and where it is not as drawn, the works will be rejected and the contractor shall re-cultivate them to the specified arrangement/ at the contractor's expense.
- Notice - give one weeks notice before:
Setting out; applying herbicide; applying fertilizer; delivery of plants/ trees; planting shrubs and trees into previously dug pits; watering; visiting site during maintenance period.
- Imported topsoils - shall be of high quality, conforming to BS 3882:2015 for planting beds. Soil texture class: sandy loam, loam (maximum 20% clay). Do not firm, consolidate or compact topsoil when laying. Preserve a friable texture of separate visible crumbs wherever possible.
- Subsoil surface preparation for ornamental planting beds - excavate and/ or place fill to required profiles and levels. When ground conditions are sufficiently dry to allow breaking up of soils, loosen thoroughly to a depth of 450mm. Remove from site stones larger than 50mm and any arisings, contamination and debris. Do not use mechanical tools within 100 mm of tree and plant stems.
- Soil amelioration -
 - A 50mm layer of PAS100 certified should be worked into the top 100mm of topsoil within areas of ornamental planting beds.
 - Mycorrhizal inoculants, such as RootStart® mycorrhizal fungi for urban soils available from GreenBlue Urban Ltd. should be applied to free pit planting holes, where trees are to be planted in imported soils.
- Ensure soil of all planting beds is graded to a level of at least 85mm below adjacent paved surfaces to ensure bark or wood chip mulches are retained.
- Following planting supply and spread evenly Melcourt Industries 'Ornamental Bark Mulch' (or similar and approved) to a depth of 75mm, over all planted areas. Finished mulch levels shall be no higher than 15mm below pavement or grass levels to avoid any spillage onto pavements or lawns.
- General plant and tree condition - All plants and trees should be in good condition; materially undamaged, sturdy, healthy and vigorous.
 - Appearance: Of good shape and without elongated shoots.
 - Hardiness: Grown in a suitable environment and hardened off.
 - Health: Free from pests, diseases, discoloration, weeds and physiological disorders.
 - Budded or grafted plants: Bottom worked.
 - Root system and condition: Balanced with branch system.
- All plants shall be true to name, forms, dimensions, provenance and other criteria specified in the schedule of plants and adhere to the minimum number of breaks as determined in the plant schedule and/or HTA National Plant Specification. Any stock falling below this standard, in the sole opinion of the inspecting landscape architect, shall be lifted and replaced at the contractor's expense.
- Substitutions - Submit alternatives where plants/ trees are unobtainable or known to be likely to be unobtainable at time of ordering. Approval must be obtained before making any substitutions.
- Biosecurity, labelling and documentation -
 - All plants must be grown in the United Kingdom for at least one growing season (or as required for biosecurity purposes) unless otherwise approved.
 - All plants and trees, on delivery to site must be clearly labelled with their full botanical name; supplier's name; employer's name and project reference; country of origin and plant specification, in accordance with scheduled National Plant Specification categories.
 - Plant passports must be supplied and retained as required by the APHA and for all plants on the EU Xylella fastidiosa host list.
 - Source from known suppliers or visit suppliers to view their processes, procedures, bio-security arrangements and the plants they grow.
 - Make sure that imported plants both originate from and are sourced from disease free areas.
- Time of year and conditions acceptable for planting -
 - All reasonable care should be taken to ensure that planting takes place in the best conditions to ensure that plants establish well and thrive.
 - Soil should be moist, and not waterlogged or frozen.
 - The best time to plant most containerised plants is in mid-autumn or early/mid spring although with careful watering and aftercare planting of containerised plants can take place year round in good conditions.
 - Rootballed and bareroot plants can only be planted in the dormant season from late October to March (in good conditions). When the programme requires planting to be carried out outside of these times, all rootballed and bareroot plants must be substituted for equivalent container grown plants.
 - Plant bulbs, corms and tubers in autumn (late september/ october) unless otherwise recommended by sound horticultural advice.
- Shrub to be planted in pits wide enough to accommodate roots when fully spread and 75 mm deeper than root system. Break up the bottom of the pit to a depth of 150 mm, incorporating soil ameliorant/ conditioner at 50 g/m². Water thoroughly immediately after planting and lightly firm soil around plants.
- Trees to be prepared and transplanted in accordance with BS 8545.
- Watering - wet full depth of topsoil.
 - Application: Even and without damaging or displacing plants or soil.
 - Frequency: As necessary to ensure establishment and continued thriving of planting.

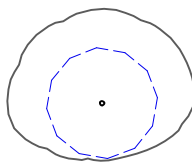
Plant Schedule								
Latin Name	Common Name	ID	Qty	Container (Litres)	Height (cm)	Spacing (mm)	Number of breaks (min)	
Shrubs								
Prunus lusitanica 'Angustifolia' 20L	Portuguese Laurel	PIA-20L	33	20L	150-175cm	600		
Weigela florida 'Rosea'	Weigela Rosea	WFR	11	5L	30-50cm	500		
Plant Mixes	Area	%	Qty	Latin Name	Common Name	Container (Litres)	Height (cm)	Rate/ Spacing
Screening Hedge Mix	53.8 sq m							0
		45	72	Viburnum opulus	Guelder Rose	WHP		3 Plants/sq m
		20	32	Prunus lusitanica 'Angustifolia'	Portuguese Laurel	10L		3 Plants/sq m
		35	57	Ligustrum vulgare	Common Privet	WHP		3 Plants/sq m
Latin Name	Common Name	Qty	Container/ Root condition	Height (cm)	Form	Girth	Number of breaks (min)	Min Clear Stem (cm)
Trees								
Betula pendula	Silver Birch	2	75L	425-450cm	EHS		5	175-200cm
Thuja plicata	Western Red Cedar	1	65L	300cm	S			N/A
Abbreviations								
ETH	Feather	EHS	Extra Heavy Standard		Whips, rootballed and bagged trees should only be planted during the dormant season (October-March). Otherwise only containerised stock will be accepted.			
LS	Light Standard	AHS	Advanced Heavy Standard					
SS	Select Standard	SM	Semi-Mature					
S	Standard	WHP	Whip					
HS	Heavy Standard	R.B.	Root Ball					



General Notes

Contractor must verify all dimensions, levels and existing service alignments on site before commencing any work or shop drawings. Any discrepancy concerning the drawings/quantities should be referred to the Landscape Architect immediately. Only figured dimensions to be taken from this drawing. Do not scale off this drawing. All landscape drawings to be read in conjunction with the landscape specification and all relevant engineer's and architect's drawings/specifications. This drawing is Copyright and must not be reproduced without consent of Guarda Landscape.

Softworks Key



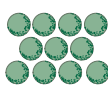
Indicative position of existing trees
Indicative RPA in dashed blue line. Refer to Tree Constraints Plan by Arbol Euroconsulting Ltd. for root protection areas and further existing tree information



Proposed extra heavy standard tree (EHS) with double stake and tie (refer to Inset 1)



Ornamental Planting Bed with 75mm depth bark mulch to specification

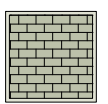


Ornamental Hedge
Prunus lusitanica 'Angustifolia' to continue existing hedge
With 75mm depth bark mulch to specification

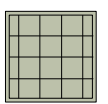


Screening Hedge
45 % Viburnum opulus, 35 % Ligustrum vulgare, 25 % Prunus lusitanica 'Angustifolia'. To be planted in groups of 5 or 7 plants. With 75mm depth bark mulch to specification

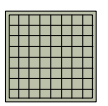
Hardworks Key



Parking space
240 x 160 mm concrete blocks to be laid in stretcher bond. To be mid grey and textured. Graphite mistral paving available from Marshalls or similar and approved
205 mm wide Conservation kerb/edge unit - Colour : Charcoal - Finish : textured
Available from Marshalls or similar and approved



Patio
Mid grey 600 x 600 mm concrete flags to be laid regular. To be sawn. Modal paving available from Marshalls or similar and approved
205 mm wide Conservation edge unit - Colour : Charcoal - Finish : textured
Available from Marshalls or similar and approved



Path
400 x 400 mm concrete flags to be laid regular. To be mid grey and textured. Modal paving available from Marshalls or similar and approved
205 mm wide Conservation edge unit - Colour : Charcoal - Finish : textured
Available from Marshalls or similar and approved



Timber low retaining wall
Approximately 280mm high retaining wall. Ungrooved Chamfered Landscape Timber. Planed Finish. Section to be 140 x 140mm. Colour to client's specification.
Planting area to prepared for residents to plant up to their own preference (refer to General Specification). 75mm depth bark mulch to specification after planting

P03 11/06/20	Revised to Arboriculturist's comment	MC	CX
P02 09/06/20	Revised to Client's comments	MC	CX
P01 05/06/20	First issue	MC	CX
Rev	Date	Comments	Dr

guarda

landscape

Stapleford Farm, Alphetonstone, Bures, Essex, CO8 5DT
The Record Hall, 16-16A Baldwin's Gardens, Hatton Garden, London, EC1N 7RJ
+44 (0)1206 638085 - www.guardalandscape.com

Client
Alan Cox Associates
Site
1A Shelley Close, Edgware
HA8 8DX
Drawing Title
Detailed Hard and Soft
Landscape Proposals

Scale
1:200 @ A1

Status
Planning

Project	Drawing Number	Revision
2030	GUA-DR-L-002	P03
Drawn	Checked	Date
MC	CX	June 2020

© GUARDA Ltd. 2019